

# VP68 1~3k Li-ion Series



## Features

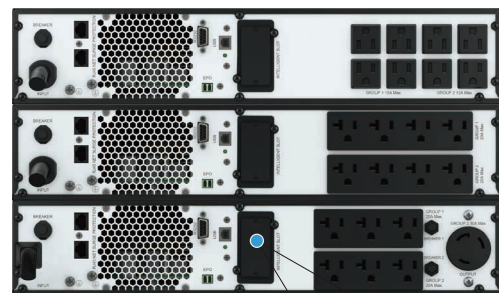
- Rack/Tower convertible design
- Built-in lithium battery with more than 2000 times cycle life
- Reliable BMS protection
- Wide input voltage range: 75~151Vac
- Selectable output voltage: 100/110/115/120/125Vac
- Smart charger design for optimized battery performance
- Emergency power off function (EPO)
- Generator compatible
- Hot-Swappable battery design
- Cold start
- Intelligent fan speed regulation
- Programmable receptacles optional
- Versatile LCD human-computer interface, 3.5inch touch screen optional
- Multiple communication interface: RS232 (USB/EPO/Dry contact card/SNMP card optional)
- Multiple protection function: short-circuit, overload, overheat, battery overcharge and over discharge, output low voltage and fan fault alarm
- Internal batteries offer industry-leading runtime (Up to 9 minutes at full load) to protect critical equipment during an unexpected power loss
- Lithium-ion batteries can pack more power into smaller spaces
- Recharge to 90% capacity in 3 hours or less
- Lithium-Ion technology delivers on average twice the life expectancy of traditional VRLA batteries
- Extend runtime when on battery power by power-cycling connected equipment and shedding less-critical loads
- High operating efficiency, battery mode efficiency up to 92%, mains mode efficiency up to 98.5%
- Pass the safety certification standard UL1778
- The EMC meets FCC Part 15 Class B standards
- UL 1642(Cell)/UL1973(Pack)/UN 38.3 (Transportation) certificate



Multifunctional bracket



The LCD panel can be rotated (Touch screen is gravity sensing)



Dry contact card    SNMP

## Technical Specifications:

MODEL	VP68 Li RT 1k	VP68 Li RT 1.5k	VP68 Li RT 2k	VP68 Li RT 3k
Capacity	1000VA/900W	1500VA/1350W	2000VA/1800W	3000VA/2700W
<b>INPUT</b>				
Nominal voltage	100/110/115/120/125Vac			
Input voltage range	75-151Vac			
Input connector	NEMA 5-15P		NEMA L5-20P	NEMAL5-30P
Input cord length	1.8m			
<b>FREQUENCY</b>				
Frequency range	50/60Hz (Auto sensing)			
<b>OUTPUT</b>				
Output voltage	100/110/115/120/125Vac			
Voltage regulation	±1%			
Power factor	0.9			
Output frequency	50/60Hz			
Crest factor	3:1			
Harmonic distortion (THDv)	≤2% Linear load ≤5% Non linear load			
Transfer time	Typical 4-6ms			
Output waveform	Sinewave			
Outlets-Total	NEMA5-15R×8	NEMA5-15R×8	NEMA5-20R×8	L5-30R×1+NEMA5-20R×6
<b>EFFICIENCY</b>				
AC mode	98.5%	98.5%	98%	98%
Battery mode	89.5%	91.0%	91.0%	92.0%
<b>BATTERY</b>				
Battery type	LiFePO4			
Backup time (Full load)	9.5min	8min	9.5min	9.5min
Battery voltage	25.6Vdc	48Vdc	76.8Vdc	76.8Vdc
Battery capacity	9Ah	6Ah	6Ah	9Ah
Charge current	2.5A			
<b>INDICATORS</b>				
LED/LCD display	Line mode, Bat.mode, Battery low voltage, Overload & UPS fault			
<b>ALARM</b>				
Battery mode	Beeping every 4 seconds			
Battery low	Beeping every second			
Overload	Beeping twice every second			
Fault	Continuously beeping			
<b>PHYSICAL</b>				
Dimension W×D×H (mm)	440×460×86.5	440×460×86.5	440×600×86.5	440×640×86.5
Net weight (kg)	13.6	15.3	22.5	27.9
<b>ENVIRONMENT</b>				
Operating temperature	0°C~40°C			
Storage temperature	-15°C~50°C			
Humidity range	0~90%RH@0-40°C (Non condensing)			
Altitude	Up to 3000m (No derating)			
Noise level	≤45dB@1M front side		≤45dB@Line mode 1M front side; ≤50dB@Battery mode 1M front side	
<b>STANDARDS</b>				
Safety	UL1778 5th Edition CSA C22.2 NO.107.3-14			
FCC	FCC Part 15, Subpart B, ClassB ANSI C63.4-2014			

1. Specifications are subject to change without prior notice

2. Data above are typical values for reference only, not as a basis for engineering design